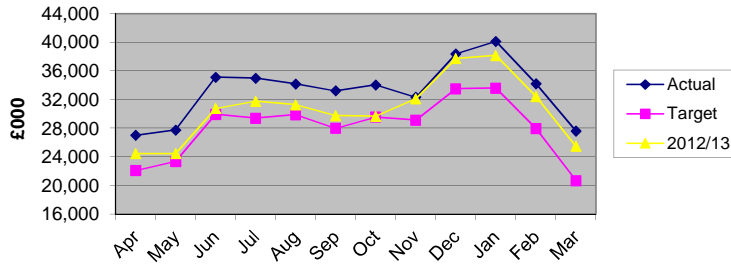


**Finance Advisory Group Finance Indicators 2012/13
as at end March 2013**

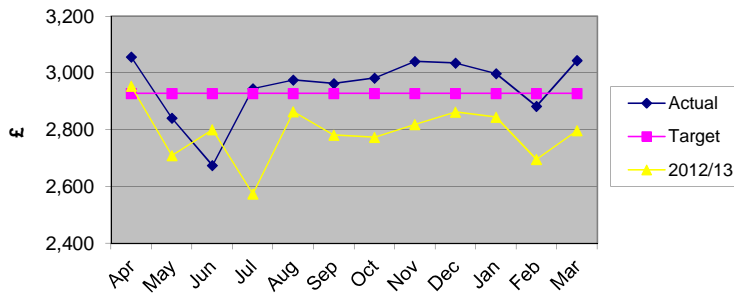
Description	target	actual	Variance		notes	graph
Monthly investment balance £000	23,355	34,222	10,867	46.5%	Total investments at month end. Precepts are paid in 10 instalments of roughly £6m, but not in June or December. Therefore, we receive cashflow benefits until the last 2 precept payments go out in February and March. The target figures have been updated to reflect the Balance Sheet position as at 31/03/11.	1
Average monthly cost per employee (non cumulative) £	2,928	3,044	116	4.0%	Target is annual pay budget divided by budget ftes, figures include agency and casual staff. Actuals excludes costs and fte of Agency staff at Dunbrik.	2.00
Number of ftes	373.2	373.8	0.6	0.2%	Target is budgeted ftes.	3
Council Tax % collected for 2012/13	98.6	98.6	0.0	0.0%	LPIFS 19. Monthly cumulative figures	-
NNDR % collected for 2012/13	98.2	97.8	-0.4	-0.4%	LPIFS 20. Monthly cumulative figures.	-
Council Tax payers % on direct debit	70.0	76.0	6.0	8.6%	LPIFS8 - % on direct debit	4
Investment return %	0.80	1.04	0.24	29.8%	Cumulative return on investments. Target is budget assumption	5
3 month LIBID		0.6581	0.66			
7 day LIBID		0.4219	0.42			
Sundry debtors: debts over 21 days £000	35	39.029	4	11.5%	21 days is taken as the base as the first reminder is issued after 3 wks.	6
Sundry debtors: debts over 61 days £000	20	25.869	6	29.3%	61 days is when the third reminder is issued (debts exclude items on 'indefinite hold', e.g. debtors in administration)	7

**Finance Advisory Group Finance Indicators 2012/13
as at end March 2013**

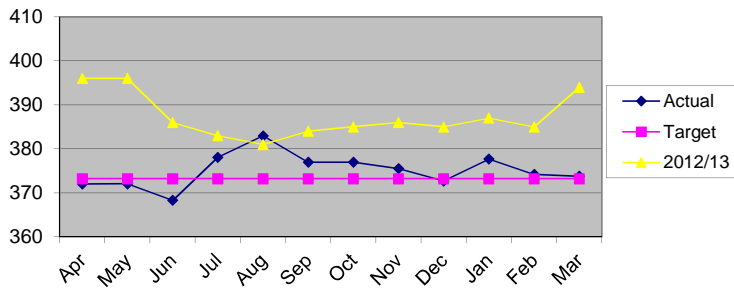
Graph 1 - Monthly Investment Balance



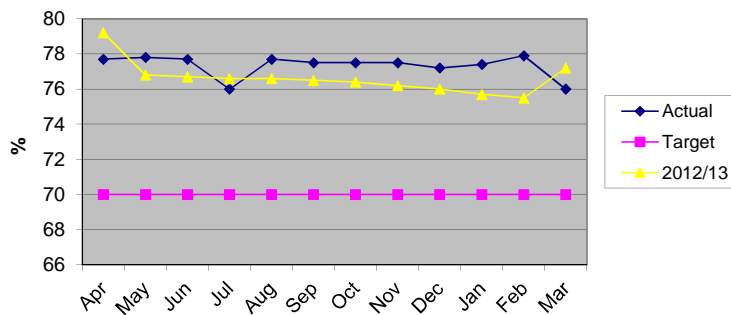
Graph 2 - Av. monthly cost per employee



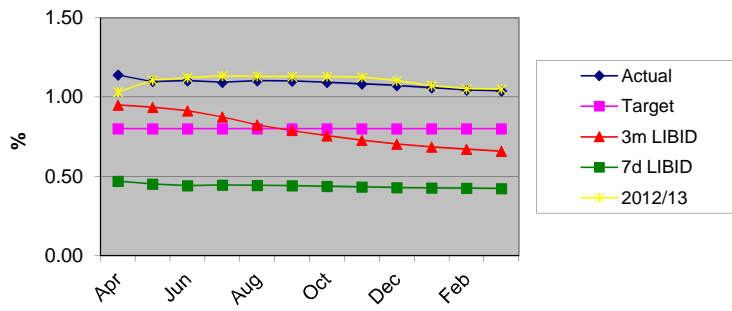
Graph 3 - Number of ftes



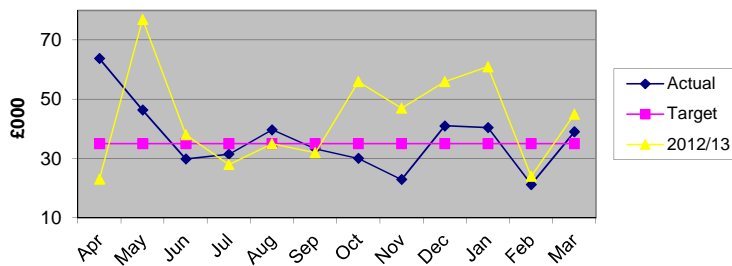
Graph 4 - Council Tax % on direct debit



Graph 5 - Investment Return %



Graph 6 - Sundry debts over 21 days



Graph 7 - Sundry debts over 61 days

